

(12) **United States Patent**
Richardson

(10) **Patent No.:** **US 9,679,392 B2**
(45) **Date of Patent:** **Jun. 13, 2017**

(54) **HOSTED CAMERA REMOTE CONTROL**

(71) Applicant: **NaturalPoint, Inc.**, Corvallis, OR (US)

(72) Inventor: **James D. Richardson**, Corvallis, OR (US)

(73) Assignee: **NaturalPoint, Inc.**, Corvallis, OR (US)

(*) Notice: Subject to any disclaimer, the term of this patent is extended or adjusted under 35 U.S.C. 154(b) by 0 days.

(21) Appl. No.: **14/802,854**

(22) Filed: **Jul. 17, 2015**

(65) **Prior Publication Data**

US 2015/0325002 A1 Nov. 12, 2015

Related U.S. Application Data

(63) Continuation of application No. 13/189,393, filed on Jul. 22, 2011, now Pat. No. 9,100,587.

(51) **Int. Cl.**

H04N 5/00 (2011.01)
G06T 7/20 (2017.01)
H04N 5/232 (2006.01)
H04N 13/02 (2006.01)
H04N 5/247 (2006.01)
H04N 5/222 (2006.01)

(52) **U.S. Cl.**

CPC **G06T 7/20** (2013.01); **H04N 5/23203** (2013.01); **H04N 5/23216** (2013.01); **H04N 5/23229** (2013.01); **H04N 5/247** (2013.01); **H04N 13/0282** (2013.01); **G06T 2200/04** (2013.01); **G06T 2207/10012** (2013.01); **H04N 5/2224** (2013.01)

(58) **Field of Classification Search**

CPC H04N 7/181; H04N 5/232; H04N 7/18; H04N 5/262; G08B 13/19641; G08B 13/19673; G08B 13/19693; G08B 13/19695

See application file for complete search history.

(56) **References Cited**

U.S. PATENT DOCUMENTS

6,774,935 B1 * 8/2004 Morimoto H04N 1/00347 348/211.3
7,102,666 B2 * 9/2006 Kanade G03B 41/00 348/142
8,203,628 B2 * 6/2012 Honjo G02B 7/102 348/240.99
8,274,564 B2 * 9/2012 Girgensohn H04N 5/247 348/143
2007/0282951 A1 * 12/2007 Selimis H04L 67/06 709/205
2007/0285560 A1 * 12/2007 Perlman G06T 1/0007 348/371

(Continued)

Primary Examiner — Frank Huang

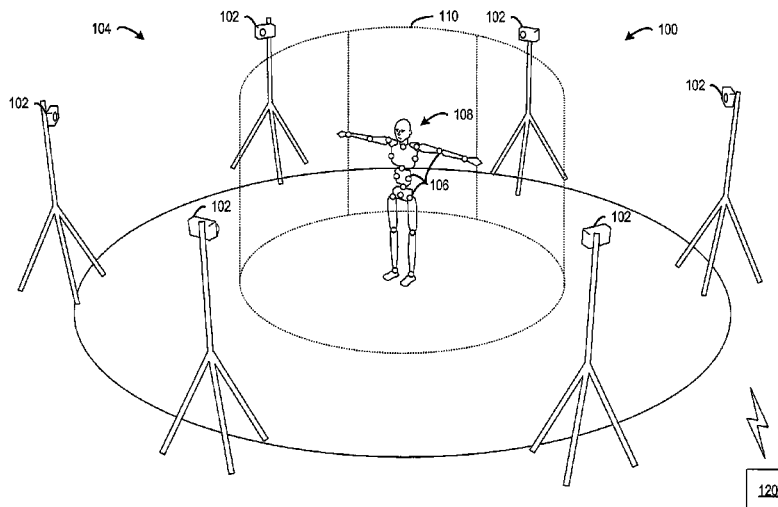
(74) *Attorney, Agent, or Firm* — Alleman Hall Creasman & Tuttle LLP

(57)

ABSTRACT

A motion capture system includes motion capture cameras positioned in various locations and orientations with respect to a motion capture volume. The motion capture system includes a host computing device that is operatively coupled with the motion capture cameras. The host computing device remotely controls operation of the motion capture cameras to record movement within the motion capture volume. At least one of the motion capture cameras includes a user-interface that is operable by a user to remotely initiate a control operation of the host computing device.

20 Claims, 6 Drawing Sheets



(56)

References Cited

U.S. PATENT DOCUMENTS

2007/0294621	A1 *	12/2007	Hansen	G06F 17/3005 715/716
2011/0025853	A1 *	2/2011	Richardson	G06T 7/2033 348/159
2011/0080424	A1 *	4/2011	Peters	H04N 1/387 345/620
2011/0149074	A1 *	6/2011	Lee	H04N 7/181 348/143
2013/0155058	A1 *	6/2013	Golparvar-Fard	G06T 19/006 345/419

* cited by examiner

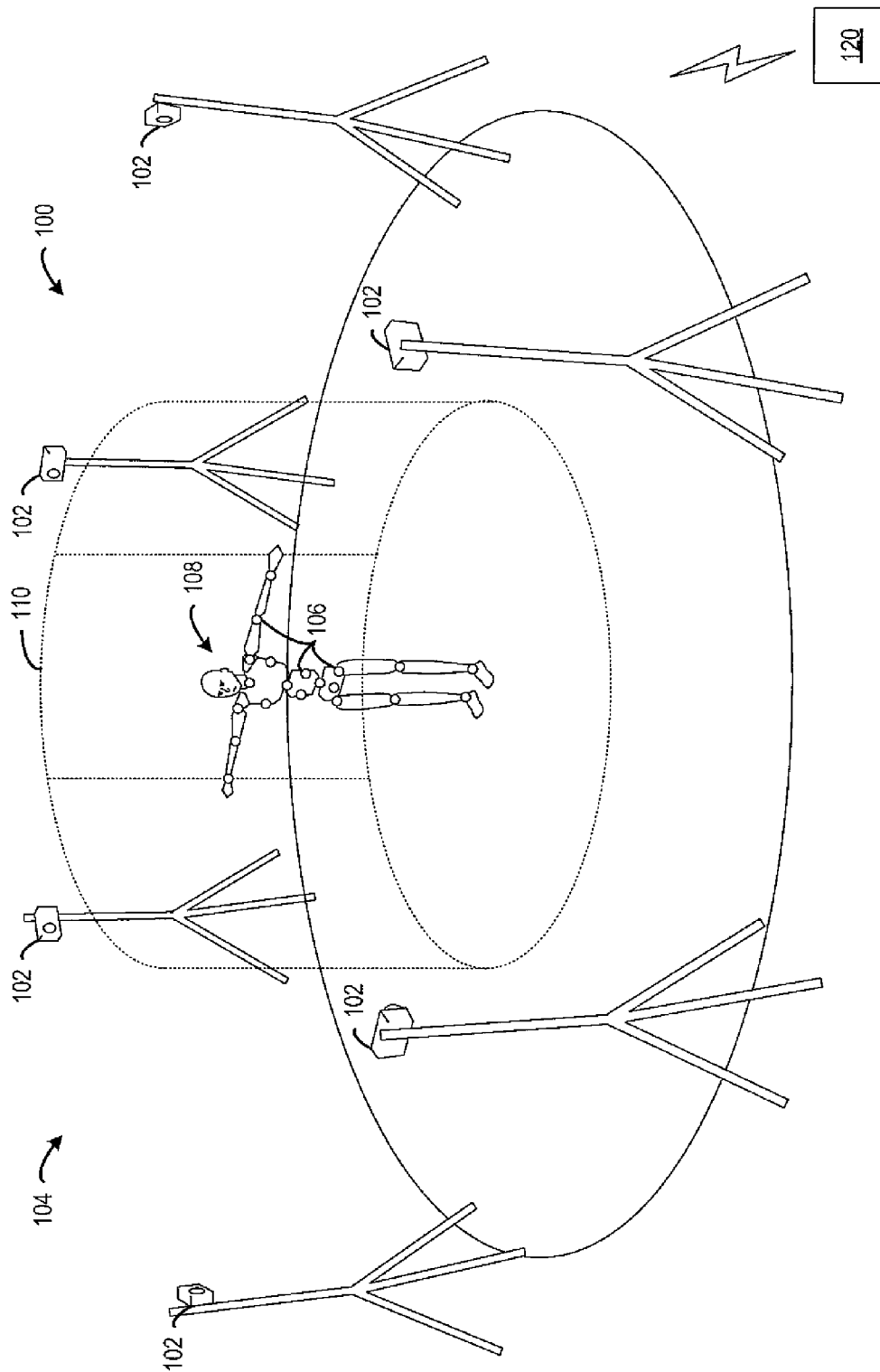


FIG. 1

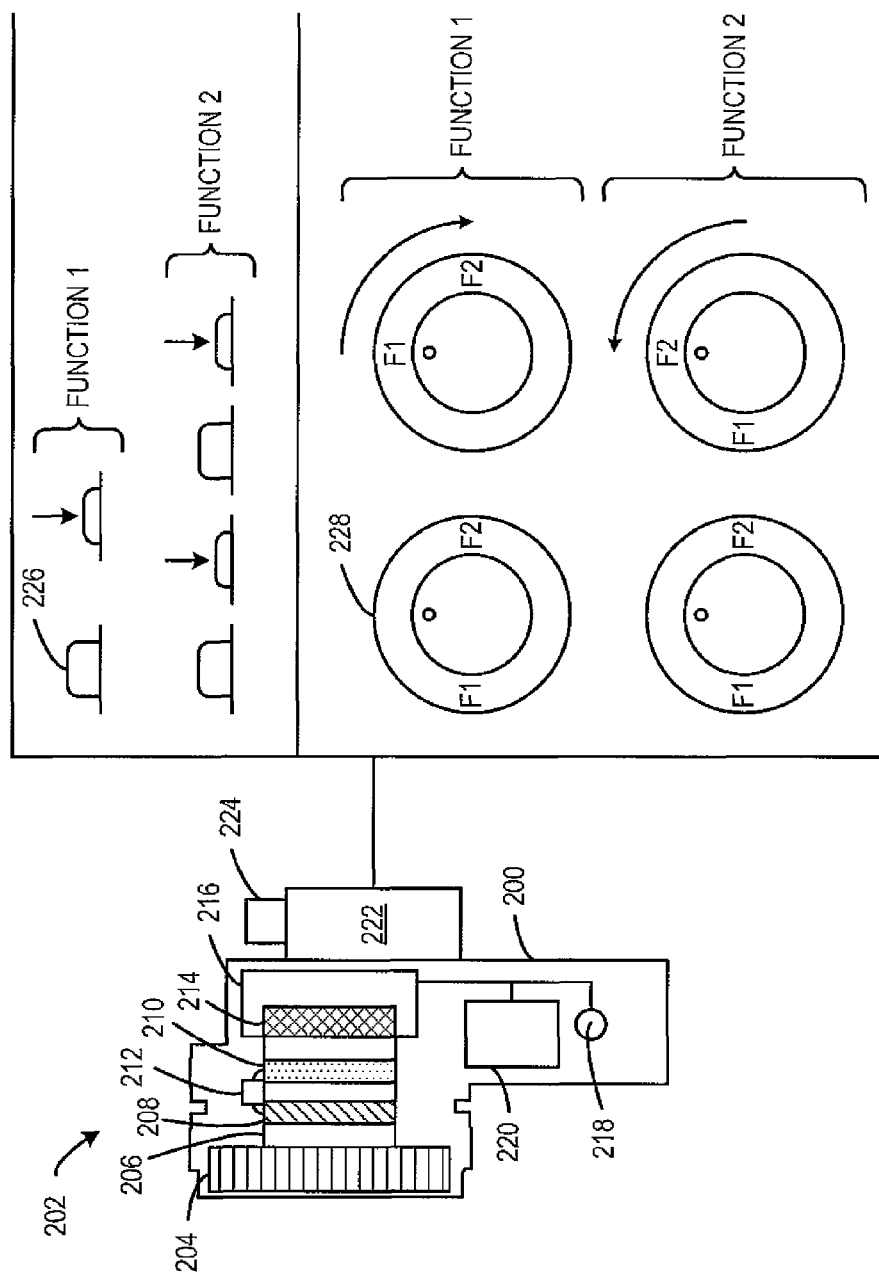


FIG. 2

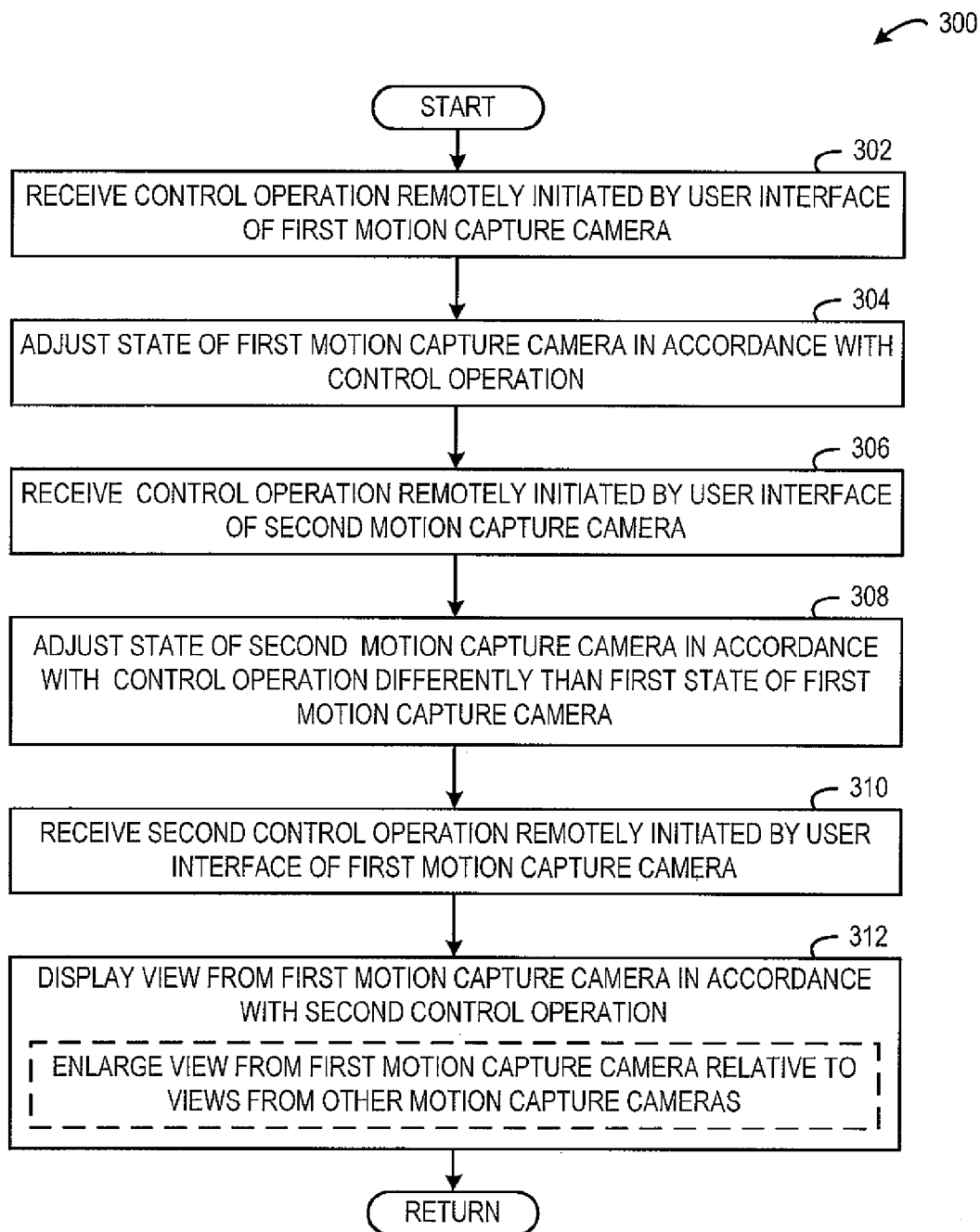


FIG. 3

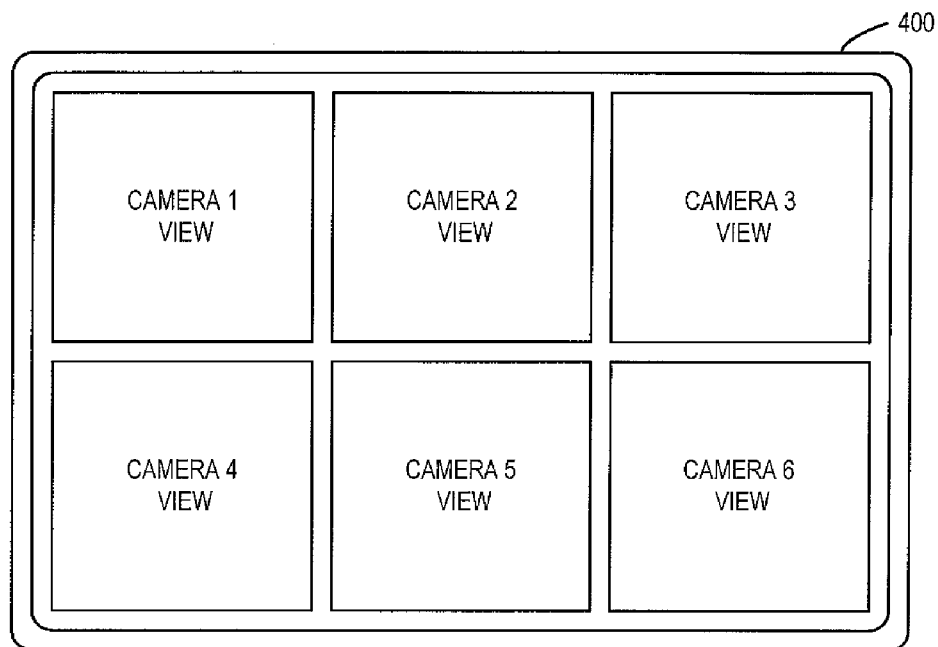


FIG. 4

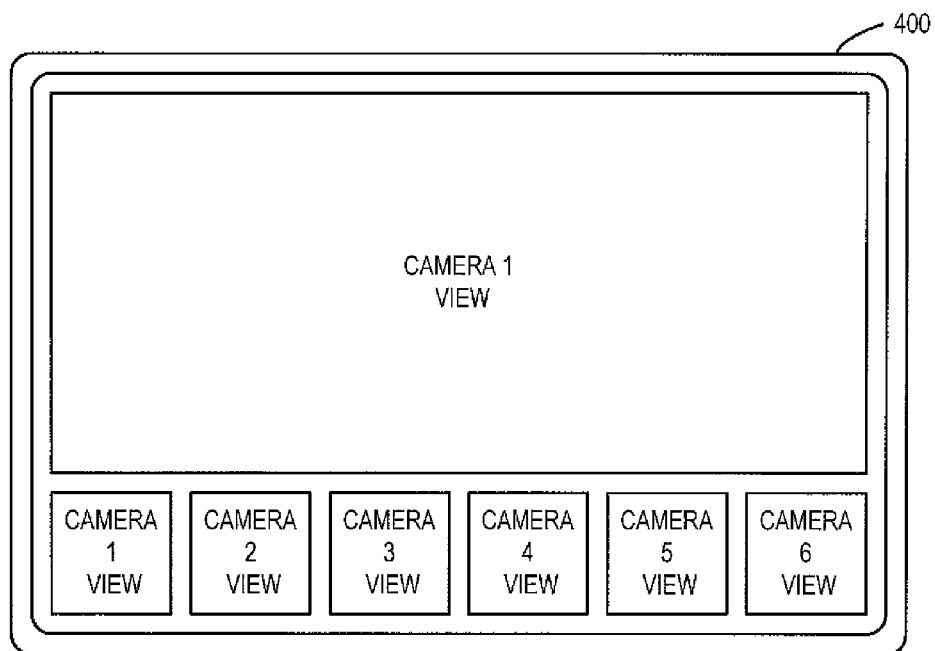


FIG. 5

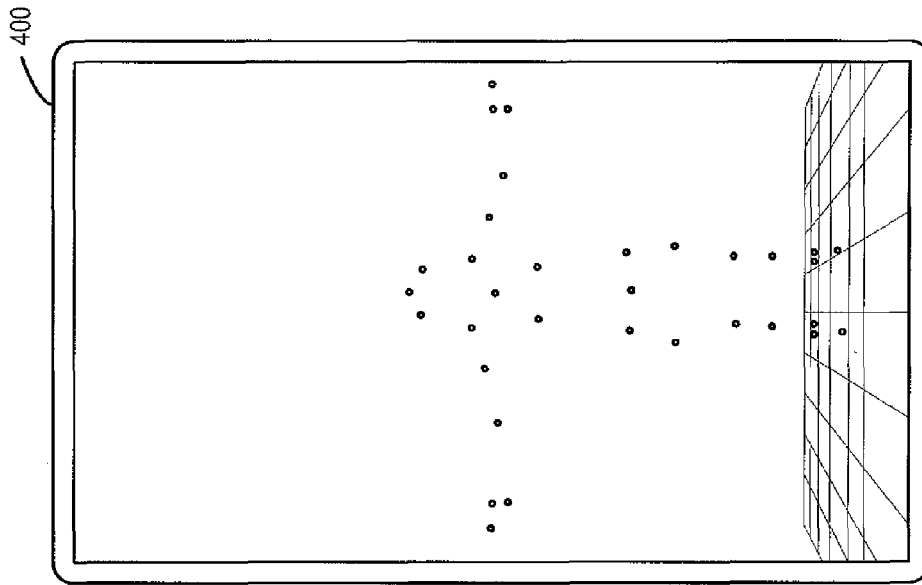


FIG. 7

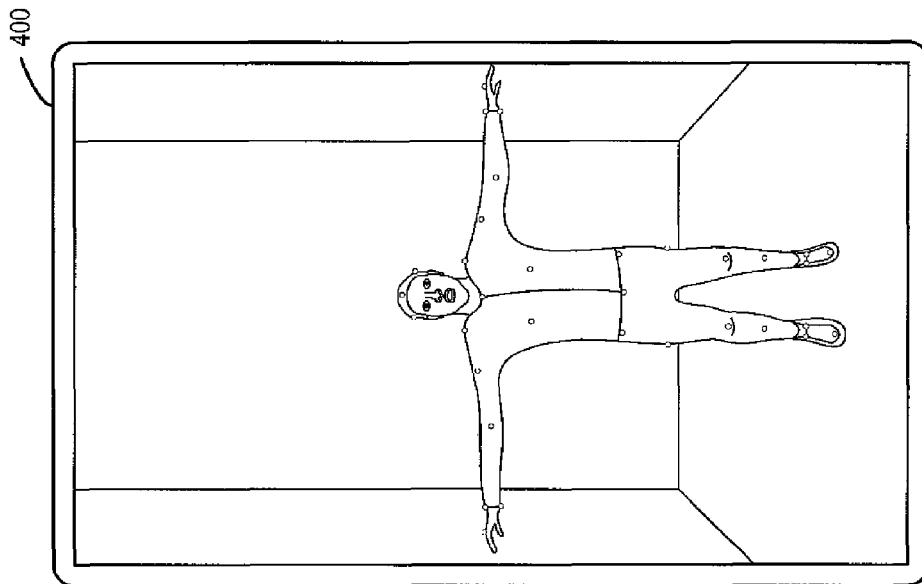


FIG. 6

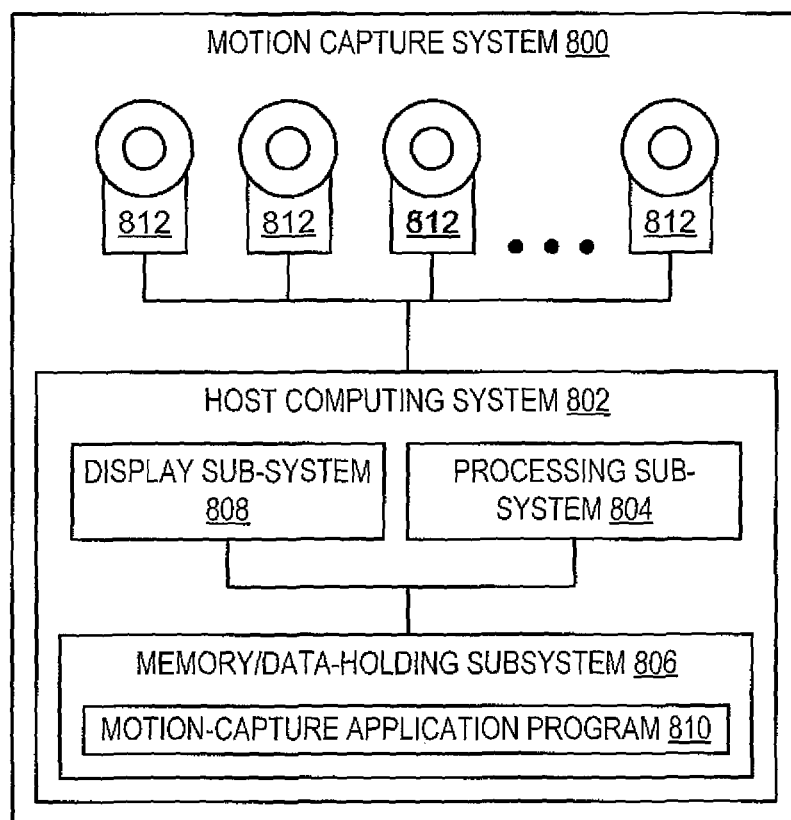


FIG. 8

HOSTED CAMERA REMOTE CONTROL**CROSS-REFERENCE TO RELATED APPLICATION(S)**

The present application is a continuation of U.S. patent application Ser. No. 13/189,393, filed Jul. 22, 2011, entitled "Hosted Camera Remote Control," the entire contents of which are incorporated herein by reference for all purposes.

BACKGROUND

Motion capture systems typically employ multiple cameras to track and capture movement of objects in a motion capture volume (e.g., markers affixed to an actor's clothing or body). Typically, the cameras in these systems are completely host-controlled, in the sense that there are no local controls whatsoever on the cameras themselves. The only action that is taken locally at a camera is the installation of the camera (e.g., on a scaffolding or other frame/support structure) and aiming of the camera with respect to the capture volume. All other control and configuration is conducted via a user interface at a host computing device.

One problem with the absence of on-camera controls is that the aiming operation can be difficult and may involve trial and error to achieve appropriate coverage of the capture volume. Often an operator will need to shuttle back and forth between the host computing device and the camera (or cameras) in order to accurately aim all of the cameras. For example, the operator may be positioned up on a ladder at the camera to aim the camera to an approximate orientation. Then the operator would need to descend the ladder and go back to the host computing device to view an image of the camera's view of the capture volume resulting from the camera's orientation for positioning feedback. If the orientation was undesirable, the operator would have to return to the camera's location and adjust the orientation, then return to the host computing device to view the positioning feedback, and so on until a desired camera orientation was achieved. Furthermore, upon achieving a desired orientation for one camera, the operator would have to return to the host computing device to switch the camera view presented by the host computing device to the next camera for positioning feedback of the next camera.

Repeatedly shuttling back and forth between the host computing device and each camera to view positioning feedback or switch between different camera views or perform other tasks is tedious, particularly for motion capture configurations that include a large number of cameras. Moreover, in some configurations, it is difficult to identify which camera is associated with a camera view that is selected for display at the host computing device without adding additional identifying marking on each camera or performing additional calibration procedures, which only increase the time and complexity of the aiming process.

Furthermore, a given camera may be in an undesired operating mode, such as in a scene mode during a calibration or aim adjustment, instead of a marker-tracking mode, for example. Also, a frame rate and/or viewing size window may need to be adjusted to perform calibration or aiming operations. Further still, a focus of the camera may need to be performed at the camera and assessed at the host computing device. In general, the need for the operator to be periodically at the camera location and the host computing

device location creates numerous issues that can significantly complicate configuration and operation of the motion capture system.

SUMMARY

In one embodiment, a motion capture system includes motion capture cameras positioned in various locations and orientations with respect to a motion capture volume. The motion capture system includes a host computing device that is operatively coupled with the motion capture cameras. The host computing device remotely controls operation of the motion capture cameras to record movement within the motion capture volume. At least one of the motion capture cameras includes a user-interface that is operable by a user to remotely initiate a control operation of the host computing device.

By providing a user interface on the motion capture camera that remotely initiates control of the host computing device in response to receiving user input, the host computing device can be at least partially controlled from the location of the motion capture camera. This remote control functionality may reduce multiple trips to the host computing device to adjust camera settings, change operating modes, switch between views from different cameras that are displayed by the host computing device or a feedback monitor, etc. In this way, the amount of time needed to setup and calibrate motion capture cameras in a motion capture system may be reduced.

BRIEF DESCRIPTION OF THE DRAWINGS

FIG. 1 schematically shows an embodiment of a motion capture system according to the present disclosure.

FIG. 2 schematically shows an embodiment of a host-controlled motion capture camera and user interface.

FIG. 3 shows an embodiment of a method for controlling a host computing device.

FIG. 4 shows a display device presenting a camera view of each of a plurality of motion capture cameras.

FIG. 5 shows a display device presenting an enlarged camera view of a selected motion capture camera.

FIG. 6 shows a display device presenting a scene mode of a motion capture camera.

FIG. 7 shows a display device presenting a tracking view mode of a motion.

FIG. 8 schematically shows an embodiment of a motion capture system according to the present disclosure.

DETAILED DESCRIPTION

The present disclosure is related to setup and calibration of motion capture cameras in a motion capture system. More particularly, the present disclosure is related to remotely initiating control of a host computing device that controls operation of a plurality of motion capture cameras from a motion capture camera. In particular, such remote initiation of control of the host computing device reduces shuttling back and forth between the host computing device and motion capture cameras during setup and calibration of the motion capture system. In this way, the process of setting up and calibrating the motion capture system may be made less tedious and labor intensive and may be achieved in a shorter period of time.

FIG. 1 shows an embodiment of a motion capture system 100 according to the present disclosure. The motion capture system 100 comprises a plurality of motion capture cameras

102 that are positioned with respect to a scene **104**. Each of the plurality of motion capture cameras **102** is operatively coupled to and remotely controllable by a host computing device **120** to record movement of markers **106** within a motion capture volume **110** of the scene **104**. Each of the plurality of motion capture cameras are controlled by the host computing device **120**. In other words, the host computing device **120** sends control commands to the plurality of motion capture cameras **102** to control operation of the plurality of motion capture cameras **102**.

The motion capture system **100** may be setup so that each of the plurality of cameras **102** has a different location and orientation in a motion capture space to capture a different vantage point of the scene **104**. More particularly, the plurality of cameras **102** may be configured to collectively detect the capture volume **110** of the scene **104**. The capture volume **110** is defined as a three dimensional (3D) space collectively viewed by the plurality of cameras **102** in which the scene **104** and/or markers **106** are detectable.

It will be appreciated that setup of the plurality of motion cameras, definition the capture volume, and camera calibration may be performed in virtually any suitable manner. For example, various different types of reference markers may be used to create data points for interpolation of intrinsic and extrinsic properties of each camera. As another example, various different patterns may be used to create data points, such as a grid or checkerboard pattern.

The markers **106** may be associated with a moving body **108** located in the scene **104**. The markers **106** may be identified in order to track motion of the moving body **108**. In the illustrated embodiment, the moving body **108** takes the form of a person and the markers **106** correspond to different joints or points of motion of the person. The position of the markers **106** may be detected by the plurality of cameras **102** and resulting marker position data is sent from the plurality of motion capture cameras **102** to the host computing device **120**. The position of the markers **106** correspond to movement of the person which may be mapped by the host computing device **120** to a 3D model for computer animation.

Note the moving body may include any suitable object or collection of objects whose position and/or movement is tracked using markers that are fixed relative to the moving body. For example, the moving body may include a face, a person, a group of people, etc. Moreover, any suitable number of markers may be employed on a moving body to suitably track movement of the moving body. In some cases, the moving body may include an object that does not move, but which is still tracked as a point of reference in the scene.

FIG. 2 shows an example embodiment of a motion capture camera **200** that may be used in a motion capture system such as the motion capture system **100** of FIG. 1. The motion capture camera **200** may include a light source **204** that is configured to outwardly direct light in a direction that is substantially coaxially aligned with an axis extending perpendicularly outward from an image sensor **216**. Since the light source is substantially coaxially aligned with the motion capture camera **200**, incident light from the light source **204** is reflected by passive markers (e.g., markers **106** shown in FIG. 1) back to the image sensor **216** so that light received at the image sensor **216** from the passive markers appears enhanced relative to light received from other positions/directions.

In the illustrated embodiment, the light source **204** takes the form of a light emitting diode (LED) ring that surrounds a lens **206** of the motion capture camera **200**. The LED ring **204** may be selectively illuminated to adjust a signal-to-

noise ratio of an image detected by the motion capture camera **200**. Specifically, the LED ring **204** may be illuminated to increase the noise floor of the signal-to-noise ratio to increase the brightness of passive markers relative to other objects in the scene in order to more easily identify the markers.

In some embodiments, the light source **204** may provide infrared (IR) light that is not visible so as not to distract performers in the capture volume. However, it will be appreciated that any suitable wavelength of light may be used to illuminate a motion capture space. In embodiments where active markers are employed, the light source **204** may be omitted from the motion capture camera **200** or may remain turned off so as not to interfere with capture of the active markers.

In some embodiments, the motion capture camera **200** includes a filter switcher assembly **202** that is operable to switch the motion capture camera **200** between a marker-tracking mode and a scene mode. In the marker-tracking mode, the motion capture camera **200** enhances light from a scene to a greater extent than in the scene mode in order to more easily detect the position of markers over other objects in the scene. For example, in the marker-tracking mode, the motion capture camera **200** may be configured to detect a scene at a signal-to-noise ratio that is different than the signal-to-noise ratio used during the scene mode. For example, the signal-to-noise ratio may be increased so that light reflected from markers is enhanced greater than other objects in the scene. On the other hand, in the scene mode, the signal-to-noise ratio may be set to a level that approximates normal video recording where elements of the scene are substantially not skewed through light enhancement or other methods. In other words, the brightness of markers **106** may be enhanced to a lesser extent or not at all relative to other elements of the scene.

The filter switcher assembly **202** includes the lens **206**, a marker-tracking optical filter **208**, a scene-view optical component **210**, a switching mechanism **212**, an imager **214**, and an image sensor **216**. The lens **206** may be configured to modify light entering the motion capture camera **200**. For example, the lens **206** may focus light towards the imager **214** and/or image sensor **216**. Depending on the mode of operation of the motion capture camera **200**, light modified by lens **206** may pass through the marker-tracking optical filter **208** or the scene-view optical component **210**.

The marker-tracking optical filter **208** may be positioned between the lens **206** and the image sensor **216** during the marker-tracking mode to enhance light from markers on a moving body in the motion capture space. In the illustrated embodiment, the marker-tracking optical filter **208** is an IR-pass filter configured to pass IR light to the imager **214** and block visible and ultraviolet light. The IR-pass filter may be used in conjunction with the IR-LED ring to enhance the appearance of passive IR markers during the marker-tracking mode. The marker-tracking optical filter **208** may include any suitable filter that selectively enhances light at a selected wavelength and/or range of wavelengths. Example marker-tracking optical filters may include high-pass, low-pass, and band-pass filters that are configured to transmit (or omit) selected wavelengths of light.

The scene-view optical component **210** may be positioned between the lens **206** and the image sensor **216** during the scene mode to enhance light from the markers on the moving body in the motion capture space to a lesser extent than in the marker-tracking mode. In other words, the scene view optical component may be configured to pass light from markers, the moving body, and non-marker objects in the

5

scene to the image sensor so that substantially everything in the motion capture space may be captured in the scene view. In some embodiments, the scene view optical component may enhance light (e.g., pass/omit) at a different wavelength or range of wavelengths than the marker-tracking optical component. In some embodiments, the scene-view optical component may inversely correspond to the marker-tracking optical filter. For example, if the marker-tracking optical filter is an IR-pass filter then the scene-view optical component may be an IR-cut filter. In some embodiments, the scene-view optical component may be clear (e.g., glass) so as not to filter or substantially enhance light received from the lens.

The switching mechanism **212** is actuatable to positionally interchange the marker-tracking optical filter **208** and the scene-view optical component **210** relative to the image sensor **216**. As such, the marker-tracking optical filter **208** and the scene-view optical component **210** may be alternately switched to a position in which light modified by lens **206** passes through the filter or the component to the image sensor **216** based on the mode of operation of the motion capture camera. Specifically, during the marker-tracking mode, the marker-tracking optical filter **208** is positioned between the lens **206** and the image sensor **216** and the scene-view optical component **210** is positioned so as not to modify light received at the image sensor. Likewise, during the scene mode, the scene-view optical component **210** is positioned between the lens **206** and the image sensor **216** and the marker-tracking optical filter **208** is positioned so as not to modify light received at the image sensor. The switching mechanism **212** may include any suitable actuating mechanism. For example, the switching mechanism may include a solenoid that is actuated to positionally interchange the marker-tracking optical filter and the scene-view optical component by a controller **220** of the motion capture camera **200**.

The imager **214** may be configured to detect light intensity in the form of electromagnetic radiation that may be spatially resolved in an array of pixels of the imager **214**. The image sensor **216** may be configured to create image data indicative of an image detected by the imager **214** by converting the electrical charge of each pixel of the imager **214** to a voltage as each pixel is read from the image sensor **216**. In some embodiments, the imager may be included in the image sensor. When the motion capture camera **200** is placed in a motion capture setting, the image sensor **216** may be configured to receive incident light from a capture volume and thereby generate an image of the capture volume.

The motion capture camera **200** may include a controller **220** that includes a processor and memory/data storage that holds executable instructions for controlling the motion capture camera **200**. The controller **220** may include any suitable micro-processor or the like. The controller **220** is configured to switch between different operating modes and adjust various operating parameters. For example, the controller **220** may be configured to switch to the marker-tracking mode by controlling the switching mechanism **212** to position the marker-tracking optical filter **208** to relatively enhance light from the markers received at the image sensor **216**. Correspondingly, during the marker tracking-mode, the controller **220** may adjust various operating parameters of the motion capture camera to enhance light received from the markers. For example, the controller may reduce the exposure time and/or increase the frame rate to enhance the brightness of markers relative to other objects in the scene. Further, the controller **220** may perform marker-tracking

6

analysis operations, such as brightness thresholding or marker interpolation to identify a position of the markers in the scene.

Furthermore, during the scene mode, the controller **220** controls the switching mechanism **212** to position the scene-view optical component to enhance light from the markers received at the image sensor **216** to a lesser extent than in the marker-tracking mode. Correspondingly, during the scene mode, the controller **220** may adjust various operating parameters of the motion capture camera to enhance light from the markers to a lesser extent than in the marker-tracking mode. For example, the controller may increase the exposure time and/or decrease the frame rate to allow more light to reach the imager in order to form an image where the markers as well as other objects in the scene are visible and substantially not skewed. Note any suitable motion capture camera operating parameter may be adjusted when switching between marker-tracking mode and scene mode.

In some embodiments, the controller **220** may execute preprogrammed macro functions when switching between operating modes that automatically adjust hardware and software functionality of the motion capture camera. For example, executing a marker-tracking mode macro function may command actuation of the switching mechanism as well as adjustment of the exposure time and frame rate. Accordingly, switching between modes can be performed quickly without numerous individual adjustments that would consume time during a motion capture session.

The communication link **218** may enable the motion capture camera **200** to be operatively coupled with a host computing system. The communication link **218** may be a wired or wireless link. In some embodiments, the communication link may include a communication port that accepts a transmission wire. In some embodiments, the communication link may include a transceiver. The controller **220** may send image data to the computing device for image analysis and/or storage via the communication link **218**. In some embodiments, the controller **220** may remotely initiate a control operation of the host computing device by sending the control operation through the communication link **218**.

In some embodiments, the motion capture camera **200** may be controlled remotely from a host computing system. For example, the host computing system may send control signals to switch between operating modes and/or adjust operating parameters. Accordingly, the controller **220** may be operable to receive a control operation from a host computing device and adjust operation of the motion capture camera **200** in accordance with the received control operation. For example, the controller **220** may receive a control operation from a host computing device that commands the motion capture camera to record movement within a motion capture volume, and the controller **220** may adjust operating parameters of the motion capture camera **200** to comply with the control operation and may send resulting image data to the host computing device. In some embodiments, the motion capture camera **200** may be host-controlled, in the sense that there are no controls on the camera itself that initiates a control operation to the camera itself. Instead, control operations are received from a host computing device.

As discussed above, in some cases, it may be advantageous to remotely initiate a control operation of a host computing device from the location of a motion capture camera, such as during setup, calibration, or the like. Accordingly, the motion capture camera **200** may include a user interface **222** that is user operable to remotely initiate a control operation of a host computing device via user input

to or manipulation of the user interface **222**. In particular, the user interface **222** enables a user to provide control input that causes a control signal to be sent to a host computing device that is operatively coupled with the motion capture camera **200**. In response to receiving the control signal, the host computing device performs a control operation that corresponds to the control signal.

In some cases, the control operation causes the host computing device to adjust a setting or mode at the host computing device. For example, the control operation may cause the host computing device to display a view of the capture volume from the motion capture camera that initiated the control operation on a display device operatively coupled with the host computing device. As a particular example, the control operation may cause the host computing device to display a view of the capture volume from the motion capture camera that initiated the control operation on a display device operatively coupled with the host computing device. The view may facilitate aiming the motion capture camera by the user during setup.

In some cases, the control operation causes the host computing device to adjust an operating parameter, setting, or mode of the motion capture camera that initiated the control signal. For example, the control operation may cause the host computing device to adjust a frame rate of the motion capture camera that initiated the control operation. As another example, the control operation may cause the host computing device to change an operating mode of the motion capture camera that initiated the control operation.

In some cases, the control operation causes the host computing device to adjust a setting or mode of a motion capture camera other than the motion capture camera that initiated the control signal. For example, the control operation may cause the host computing device to place the motion capture camera that initiated the control operation in a first operating mode and one or more other motion capture cameras in a second operating mode different from the first operating mode. In one particular example, a control operation may cause the host computing device to place the motion capture camera that initiated the control operation in a scene mode and place the other motion capture cameras in a marker tracking mode. As another example, a control operation may cause the host computing device to increase the frame rate of the motion capture camera that initiated the control operation and decrease the frame rate of the other motion capture cameras.

It will be appreciated that the user interface **222** may be used by a user to remotely initiate any suitable control operation that is executable by a host computing device from the location of the motion capture camera **200**. Example control operations include selecting a view from a motion capture camera for display on a display device, increasing or maximizing a view from a designated motion capture camera relative to views from other motion capture cameras on a display device, changing an operating mode of a designated motion capture camera (e.g., scene mode, marker-tracking mode, etc.) adjusting an operating parameter of a designated motion capture camera (e.g., a focus, a frame rate, exposure level a signal-to-noise ratio, etc.). In some cases, a control operation may have macro functionality that causes a plurality of operations to be sequentially or simultaneously performed. For example, a single control operation that is remotely initiated from a motion capture camera may cause a host computing device to display a camera view from that motion capture camera on a display device (e.g., feedback monitor), change the exposure level of that motion capture camera to better view the camera view on the

feedback monitor, and change the operating mode of that motion capture to make the camera view more visible for aiming purposes. By remotely initiating a control operation at the host computing device from the motion capture camera location, multiple trips to the host computer to adjust camera settings may be eliminated. Accordingly, the motion capture camera aiming and setup process may be sped up.

The user interface **222** may take any suitable form that enables a user to provide input to remotely initiate a control operation at a host computing device. In one embodiment, the user interface **222** includes a depressible button **226**. The depressible button **226** is depressible to initiate a function or a control operation at the host computing device. In other words, in response to actuation of the depressible button **226** by a user, the motion capture camera **200** sends a control signal to the host computing device to initiate a control operation. In some embodiments, the depressible button **226** is a multi-state actuator that can be placed in different states to initiate different functions or control operations. For example, as illustrated in FIG. **2**, a single tap of the depressible button **226** may initiate a first function and a double tap of the depressible button **226** in quick succession may initiate a second function that is different from the first function. In one particular example, the single tap initiates a control operation that switches the motion capture camera **200** between the marker-tracking mode and the scene mode, and the double tap initiates a control operation that adjusts a focus of the motion capture camera **200**. As yet another example, the depressible button **226** may be placed in a third state by holding the depressible button down for a designated duration to initiate a third function, such as a reset function that reloads control operations received from the host computing device.

In another embodiment, the user interface **222** includes a selector wheel **228**. The selector wheel **228** is rotatable to initiate a function or a control operation at the host computing device. In other words, in response to rotation of the selector wheel **228** to a designated position by a user, the motion capture camera **200** sends a control signal to the host computing device to initiate a control operation. In some embodiments, the selector wheel **228** is a multi-state selector that can be rotated to different positions to initiate different functions or control operations. For example, as illustrated in FIG. **2**, the selector wheel may be rotated clockwise to a first position to initiate a first function and may be rotated counterclockwise to a second position to initiate a second function that is different from the first function. In one particular example, the selector wheel **228** is rotatable to a first position to set an exposure level for capture of a scene and rotatable to a second position to set a masking region for the scene. It will be appreciated that the selector wheel may be rotated to any suitable number of positions to initiate any suitable number of different control operations.

In some embodiments, the motion capture camera **200** includes an indicator **224** that is configured to provide user-perceivable feedback in response to a state change of the motion capture camera **200**. In some embodiments, the indicator **224** may be activated by a control operation from the host computing device. In some embodiments, the indicator **224** may be activated in response to locally detecting a state change of the motion capture camera **200**. A state change may include a change in operating mode, an adjustment of an operating parameter, a selection of a view from the motion capture camera for display on a display device, etc. In some embodiments, the indicator **224** may provide visual feedback that is perceivable by a user. For example, the indicator **224** may include a light emitting diode that

lights up to indicate the motion capture camera **200** is selected or that a task is accomplished. In some embodiments, the indicator **224** may provide audio feedback that is perceivable by a user. For example, the indicator **224** may include a speaker that emits a “beep” or other noise to indicate a change in operating mode or an operating parameter adjustment.

It will be appreciated that the above described motion capture camera configuration is an exemplary embodiment and other embodiments of cameras, user interfaces, filters, and/or optical components may be implemented in the motion capture system without departing from the scope of the present disclosure. For example, a filter, optical component, and/or filter switcher assembly may be attached externally to a camera instead of being integrated into the camera. In some embodiments, at least some filtering may be performed via image processing software executable by the controller or the host computing system in addition to or instead of mechanical filters and other software on-board the motion capture camera. As another example, the user interface may be remotely coupled to the motion capture camera, such as a remote control device.

Furthermore, while the illustrated embodiment of the motion capture camera is employed in a passive marker setting, it will be appreciated that the motion capture camera and related methods and applications may be employed in an active marker setting. Thus, in some embodiments, the light source may be omitted from the motion capture camera, and light may instead be produced by the active markers. In some cases, the light source of the motion capture camera may remain turned off during motion capture in an active marker setting to not interfere with light produced by the active markers.

FIG. 3 shows a flow diagram of an embodiment of a method **300** for controlling a host computing device operatively coupled to a plurality of motion capture cameras. In one example, the method **300** may be performed in a motion-capture system where all cameras are host-controlled by the host computing device. The method **300** is executable, for example, by the host computing device **120** shown in FIG. 1. At **302**, the method **300** includes receiving a first control operation remotely initiated by user input to a user interface of a first motion capture camera. The first motion capture camera is one of a plurality of motion capture cameras that are operatively coupled with the host computing device. The control operation is remotely initiated by the user interface in response to receiving user input to the user interface. For example, the user may actuate a depressible button of the user interface to remotely initiate the control operation at the first motion capture camera.

At **304**, the method **300** includes adjusting a state of the first motion capture camera in accordance with the control operation. The control operation may cause the state of the first motion capture camera to change in any suitable manner. For example, adjusting the state may include adjusting a focus of the first motion capture camera. As another example, adjusting the state may include adjusting a frame rate of the first motion capture camera. As yet another example, adjusting the state may include changing an operating mode of the first motion capture camera. More particularly, changing the operating mode may include physically interchanging an optical component positioned in a light path upstream of an image sensor of the motion capture camera that initiated the control operation (e.g., changing from scene mode to marker-tracking mode).

In some embodiments, the method may include adjusting another motion capture camera in addition to the first motion

capture camera in accordance with the control operation. For example, the control operation that prompts the host computing device to change the operating mode of the first motion capture camera may also prompt the host computing device to change an operating mode of the other motion capture cameras differently than the operating mode of the first motion capture camera. In other words, a single control operation may cause multiple motion capture cameras to change operating modes or adjust other settings differently or the same.

At **306**, the method **300** includes receiving a second control operation remotely initiated by user input to a user interface of a second motion capture camera of the plurality of motion capture cameras. For example, the second control operation may be received from the second motion camera when the user has finished aiming the first motion capture camera and has started to aim the second motion capture camera.

At **308**, the method **300** includes adjusting a state of the second motion capture camera in accordance with the second control operation differently than the first state of the first motion camera. For example, adjusting the state of the first motion capture camera may include placing the first motion capture camera in a tracking view mode and adjusting the state of the second motion capture camera may include placing the second motion capture camera in a scene mode.

At **310**, the method **300** includes receiving a second control operation remotely initiated by a user interface of the first motion capture camera of the plurality of motion capture cameras. The second control operation may be different than the first control operation received from the first motion capture camera. For example, the first control operation may adjust a state of the first motion capture camera, whereas the second control operation may adjust a state of the host computing device (or a device coupled to the host computing device).

At **312**, the method **300** includes displaying a view of the capture volume from the first motion capture camera. The view may be displayed on a display device that is operatively coupled to the host computing device, such as a feedback monitor. In some cases, displaying the view of the capture volume from the first motion capture camera may include enlarging the view relative to views from other motion capture cameras that are displayed on the display device. In one particular example, the view of the first motion capture camera is maximized and the views from the other motion capture cameras are reduced or minimized.

The method **300** may be performed to eliminate multiple trips between motion capture cameras and the host computing device to adjust motion capture camera settings or the like. Instead, control operations can be initiated from different camera locations to control the host computing device remotely. Accordingly, the camera aiming process may be made less tedious, labor intensive, and time consuming.

FIGS. 4-5 show views from different motion capture cameras that may be displayed on a display device **400** by a host computing device in response to control operations that are remotely initiated from a motion control camera. FIG. 4 shows the display device **400** presenting a camera view of each of a plurality of motion capture cameras of a motion capture system. In the illustrated embodiment, the motion capture system includes six different cameras. Each of the views from the different motion capture cameras may be displayed simultaneously in order for a user to judge the overlap between views to determine a capture volume of a scene. In one example, the control operation that generates

11

this display state is a “display all camera views” operation that is initiated by a user via actuation of a depressible button on one of the plurality of motion capture cameras. In response to actuation of the depressible button, a control signal is sent from the motion capture camera to the host computing device. In response to receiving the control signal, the host computing device adjusts the state of the display device in accordance with a control operation that corresponds to the control signal.

FIG. 5 shows the display device 400 presenting an enlarged camera view of a selected motion capture camera. The selected camera view is enlarged relative to the views of other motion capture cameras in the motion capture system. The selected camera view may be enlarged relative to the other views in order for a user to more easily see that view from the selected camera for aiming purposes. In one example, the control operation that generates this display state is a “display selected camera view” operation that is initiated by a user via actuation of a depressible button on one of the plurality of motion capture cameras. In response to actuation of the depressible button, a control signal is sent from the motion capture camera to the host computing device. In response to receiving the control signal, the host computing device adjusts the state of the display device in accordance with a control operation that corresponds to the control signal. In some implementations, the control operation may cause a selected camera view to be maximized on the display device 400. In some implementations, the control operation may cause other views to be minimized.

FIGS. 6-7 show the display device 400 presenting views from a motion capture camera generated from different operating modes. FIG. 6 shows the display device 400 presenting a scene view produced by a motion capture camera operating in scene mode. In the illustrated example, the scene view shows an arena motion capture setup. The scene view provides a clear depiction of a person standing in the capture volume. The scene view provides a grayscale image of all of the objects in the scene. In some embodiments, the scene view may be a color image. Further, markers are visible on the person in the scene view. The markers are fixed relative to moving parts of the person. Since light from the markers is enhanced to a lesser extent in the scene mode relative to a marker-tracking mode the person and other objects in the scene are just as visible as the markers. In other words, in the scene mode the markers are not enhanced anymore than other objects in the scene including the person.

FIG. 7 shows the display device 400 presenting a marker-tracking view produced by a motion capture camera operating in marker-tracking mode. In the illustrated example, the marker-tracking view shows the arena motion capture setup. The marker-tracking view shows only the markers without the other objects in the scene including the person. In the illustrated embodiment, the marker-tracking view is substantially black and white. However, in some embodiments, the marker-tracking view may be in grayscale or color. Since light from the markers is enhanced during the marker-tracking mode, the markers appear more visible than the other objects in the scene. In some cases, operating parameters of the motion capture camera may be adjusted so that non-marker objects in the scene may be visible, but may appear darker than the light enhanced markers. Furthermore, the marker-tracking view includes a virtual plane representative of the ground that is defined during a calibration process so that the markers can be shown in relation to a reference.

12

In one example, during setup of a motion capture system, and more particularly, aiming of a designated motion capture camera, a user provides input to a user interface of the designated motion capture camera to switch the operating mode of the designated motion capture camera from the marker-tracking mode to the scene mode. The user input to the user interface remotely initiates a control operation at a host computing device that is operatively coupled with the designated motion capture camera. In particular, a control signal is sent from the designated motion capture camera to the host computing device. In response to receiving the control signal, the host computing device sends a control operation to the designated motion capture camera to switch operating modes. In this example, the designated motion capture camera is a host-controlled camera that is controlled by the host computing device. As such, the operating mode switch is commanded by the host computing device as opposed to being executed directly by the designated motion capture camera. The user may remotely initiate the operating mode switch in order to more easily perceive the view from the designated motion capture camera on a feedback monitor. In some implementations, the control operation that commands the mode switch also may cause the view of the designated motion capture camera to be automatically displayed on the display device or enlarged relative to views from other motion capture cameras.

In some embodiments, the above described methods and processes may be tied to a computing system of a motion capture system. As an example, FIG. 8 schematically shows a motion capture system 800 that includes a host computing system 802 that may perform one or more of the above described methods and processes. The host computing system 802 includes a processing sub-system 804 memory/data-holding sub-system 806, and a display sub-system 808. The host computing system 802 may be operatively coupled to a plurality of motion capture cameras 812.

The processing sub-system 804 may include one or more physical devices configured to execute one or more instructions. For example, the processing sub-system 804 may be configured to execute one or more instructions that are part of one or more programs, routines, objects, components, data structures, or other logical constructs. Such instructions may be implemented to perform a task, implement a data type, transform the state of one or more devices, or otherwise arrive at a desired result. The processing sub-system 804 may include one or more processors that are configured to execute software instructions. Additionally or alternatively, the processing sub-system 804 may include one or more hardware or firmware logic machines configured to execute hardware or firmware instructions. The processing sub-system may optionally include individual components that are distributed throughout two or more devices, which may be remotely located in some embodiments.

Memory/data-holding sub-system 806 may include one or more physical devices configured to hold data and/or instructions in the form of motion capture application program 810 executable by the processing sub-system to implement the herein described methods and processes. When such methods and processes are implemented, the state of memory/data-holding sub-system 806 may be transformed (e.g., to hold different data). Memory/data-holding sub-system 806 may include removable media and/or built-in devices. Memory/data-holding sub-system 806 may include optical memory devices, semiconductor memory devices, and/or magnetic memory devices, among others. Memory/data-holding sub-system 806 may include devices with one or more of the following characteristics: volatile, nonvola-

13

tile, dynamic, static, read/write, read-only, random access, sequential access, location addressable, file addressable, and content addressable. In some embodiments, processing sub-system 804 and memory/data-holding sub-system 806 may be integrated into one or more common devices, such as an application specific integrated circuit or a system on a chip.

Motion capture application program 810 may be configured to receive image data as well as remotely initiated control signals from the plurality of motion capture cameras 812. The motion capture application program 810 may be configured to send control signals to individually and/or collectively control operation of the plurality of motion capture cameras 812 based on the image data and the remotely initiated control signals. The motion capture application program may be configured to create a marker-tracking view and a scene view from the image data received from the plurality of motion capture cameras 812.

Display sub-system 808 may be used to present a visual representation of data held by memory/data-holding sub-system 806. As the herein described methods and processes change the data held by the memory/data-holding subsystem, and thus transform the state of the memory/data-holding subsystem, the state of display sub-system 808 may likewise be transformed to visually represent changes in the underlying data. Display sub-system 808 may include one or more display devices utilizing virtually any type of technology. Such display devices may be combined with processing sub-system 804 and/or memory/data-holding sub-system 806 in a shared enclosure, or such display devices may be peripheral display devices.

It will be appreciated that the embodiments and method implementations disclosed herein are exemplary in nature, and that these specific examples are not to be considered in a limiting sense, because numerous variations are possible. The subject matter of the present disclosure includes all novel and nonobvious combinations and subcombinations of the various intake configurations and method implementations, and other features, functions, and/or properties disclosed herein.

The invention claimed is:

1. A motion capture system comprising:
 - a plurality of motion capture cameras positioned in various locations and orientations with respect to a motion capture volume;
 - a host computing device, operatively coupled with the plurality of motion capture cameras, to remotely control operation of the plurality of motion capture cameras to record movement within the motion capture volume;
 - a display device operatively coupled to the host computing device and separate from the plurality of motion capture cameras, the display device being configured to display one or more views of the motion capture volume captured by one or more motion capture cameras of the plurality of motion capture cameras; and
 - at least one of the plurality of motion capture cameras including a user-interface operable by a user to remotely initiate a control operation of the host computing device or the plurality of motion capture cameras, where one such control operation includes a first motion capture camera of the plurality of motion capture cameras issuing a command which causes the host computing device to change one or both of a position and size of the first motion capture camera's view of the motion capture volume displayed on the display device.
2. The system of claim 1, where the display device is configured to display each view of the motion capture

14

volume for each motion capture camera, and where changing one or both of a position and size of the first motion capture camera's view of the motion capture volume comprises changing one or both of the position and size of the first motion capture camera's view of the motion capture volume relative to each other motion capture camera's view of the motion capture volume.

3. The system of claim 1, where the control operation prompts the host computing device to control the first motion capture camera to provide a user-perceivable indication that a view from the motion capture camera is selected for display.

4. The system of claim 1, where the display device presents a view of the motion capture volume from each of the plurality of motion capture cameras, and the control operation includes enlarging the view of the motion capture volume from the first motion capture camera relative to views from other motion capture cameras.

5. The system of claim 1, where the control operation prompts the host computing device to adjust a state of the first motion capture camera.

6. The system of claim 5, where adjusting the state includes adjusting a focus of the first motion capture camera.

7. The system of claim 5, where adjusting the state includes adjusting a frame rate of the first motion capture camera.

8. The system of claim 5, where adjusting the state includes changing an operating mode of the first motion capture camera.

9. The system of claim 8, where changing the operating mode includes physically interchanging an optical component positioned in a light path upstream of an image sensor of the first motion capture camera.

10. The system of claim 8, where the control operation that prompts the host computing device to change the operating mode of the first motion capture camera also prompts the host computing device to change an operating mode of other motion capture cameras differently than the operating mode of the first motion capture camera that initiated the control operation.

11. A motion capture camera apparatus comprising:

an image sensor configured to receive incident light from a capture volume and thereby generate an image of the capture volume;

a controller, operable to receive a control operation from a host computing device to record movement within the capture volume via a plurality of motion capture cameras including the motion capture camera apparatus, wherein the host computing device is configured to remotely control operation of the plurality of motion capture cameras and a display device being configured to display one or more views of the capture volume captured by one or more of the plurality of motion capture cameras, and wherein the display device is separate from the plurality of motion capture cameras; and

a user interface operable by a user to remotely initiate a control operation of the host computing device, where the control operation includes causing the host computing device to change one or both of a size and position of a view of the capture volume captured by the motion capture camera apparatus displayed on the display device relative to other views of the capture volume captured by other motion capture cameras of the plurality of motion capture cameras also displayable on the display device.

15

12. The apparatus of claim **11**, where the control operation prompts the host computing device to adjust a state of the motion capture camera apparatus.

13. The apparatus of claim **12**, where adjusting the state includes at least one of adjusting a focus of the motion capture camera apparatus, adjusting a frame rate of the motion capture camera apparatus, and changing an operating mode of the motion capture camera apparatus.

14. The apparatus of claim **11**, where the user interface includes a multi-state actuator, the multi-state actuator adjustable to a first state to remotely initiate a first control operation of the host computing device and adjustable to a second state to remotely initiate a second control operation of the host computing device different from the first control operation.

15. The apparatus of claim **14**, where the multi-state actuator includes a depressible button, where the first state includes a single tap of the depressible button, and where the second state includes a double tap of the depressible button.

16. The apparatus of claim **14**, where the multi-state actuator includes a selector wheel, where the first state includes rotating the selector wheel to a first position, and where the second state includes rotating the selector wheel to a second position different from the first position.

17. A method for controlling a host computing device operatively coupled to a plurality of motion capture cameras, comprising:

at the host computing device, receiving a first control operation through a communication link, where the first control operation is remotely initiated by user input to

16

a user interface of a first motion capture camera of the plurality of motion capture cameras, where the host computing device is operatively coupled to a display device configured to present a view of a motion capture volume from each of the plurality of motion capture cameras, where the display device is separate from the plurality of motion capture cameras, and where the first control operation includes changing one or both of a size and position of the view of the motion capture volume from the first motion capture camera displayed on the display device relative to the views from other motion capture cameras displayable on the display device.

18. The method of claim **17**, further comprising: receiving a second control operation remotely initiated by user input to a user interface of a second motion capture camera of the plurality of motion capture cameras; and adjusting a state of the second motion capture camera in accordance with the second control operation differently than a state of the first motion capture camera.

19. The method of claim **18**, where adjusting the state of the first motion capture camera includes placing the first motion capture camera in a tracking view mode and adjusting the state of the second motion capture camera includes placing the second motion capture camera in a scene mode.

20. The method of claim **17**, where the display device is configured to simultaneously present the view of the motion capture volume from each of the plurality of motion capture cameras.

* * * * *